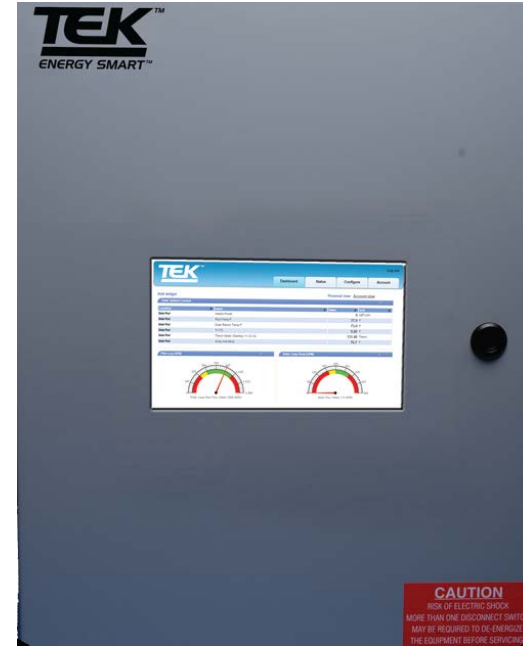
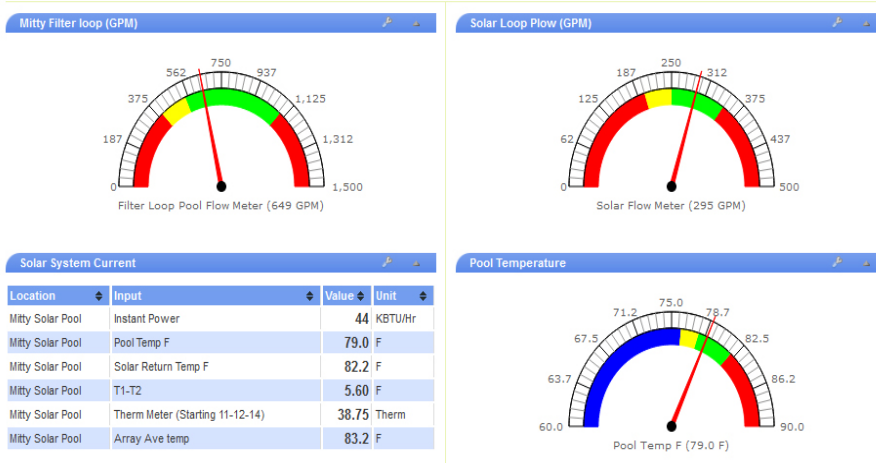


TEKTM
ENERGY SMARTTM
CONTROLLER

Systems approach to Aquatics Center Energy Efficiency



Energy Smart Controller



What is it?

Centralized hub, connecting VFDs, Flowmeters, temperature sensors and pool water chemistry and other sensors in the mechanical room to a unified web interface for monitoring and control.

Who buys a TEK Monitor/Controller and key items to look for.

- *Has a VFD, but it's in bypass during site visit.*
- *Worries about water consumption/leaks*
- *Requirement to monitor/allocate heating costs*
- *Managing multiple sites (School District, City, etc.)*
- *Managing poorly trained/marginal pool techs*
- *Dual heaters*
- *More than one pool at the site*
- *Remote location*

Energy Smart Controller

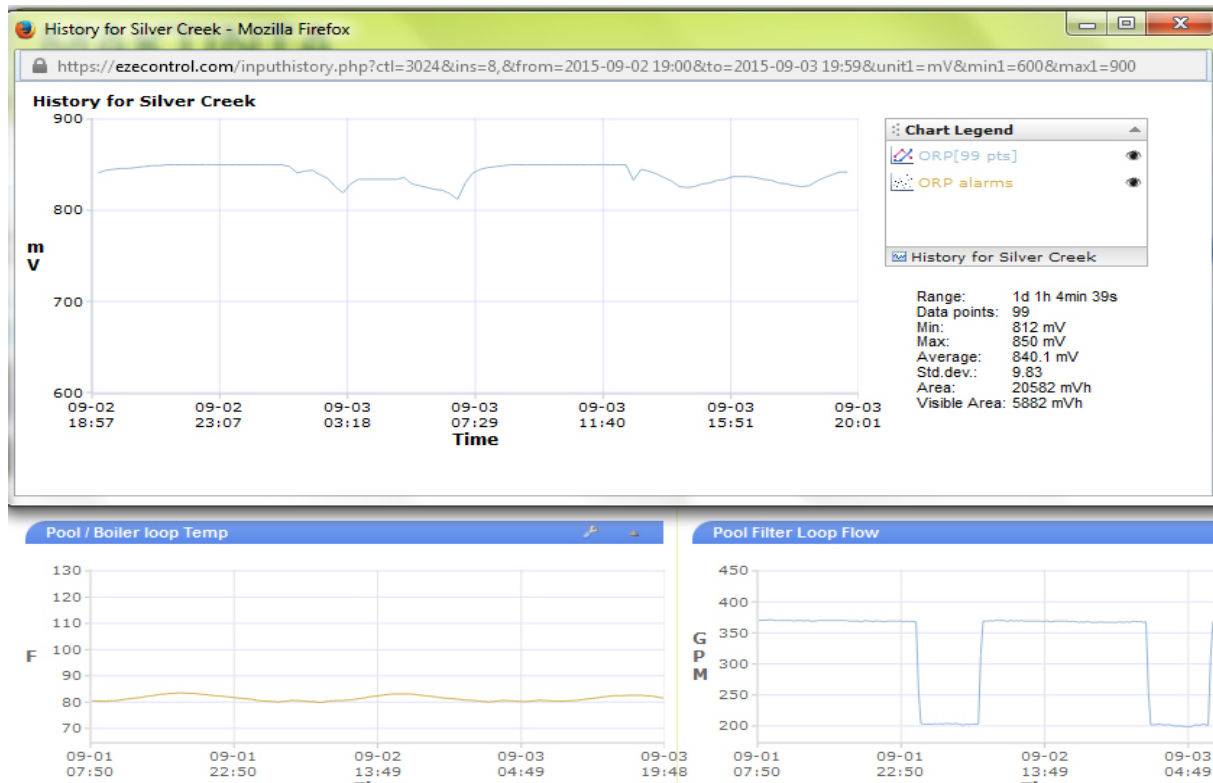


Direct Quantifiable Benefits

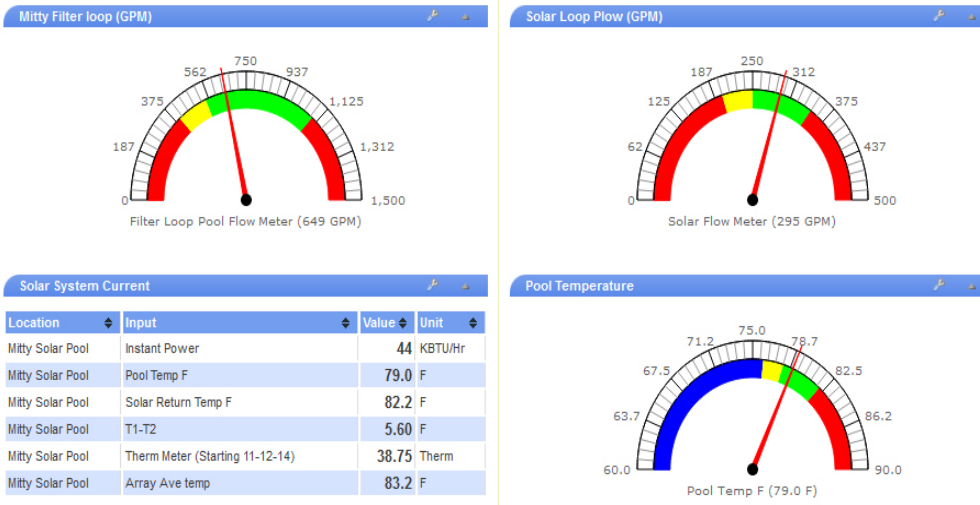
- Remote filter pump scheduling including selectable, pre-programmed seasonal schedules
- Typically doubles VFD energy savings \$'s
- Monitors pool parameters, sends text messages if pool chemistry, temp or water use out of range
- Control complex systems with dual heaters and/or solar, co-gen, etc.
- Remote access for service/support

Intangible Benefits

- *Create Virtual logs of pool PH, ORP, Temp*
- *Monitor water use.*
- *Track energy consumption*
- *Check pool in real time using any web enabled device*
- *Confirm pump schedules, monitor thermal pool cover use.*



Energy Smart Controller



Customizable Monitoring/Control

- Turn on/off pumps and trigger speeds (GPM)
- Monitor/Log pool parameters including: Temps, chemistry, energy use, solar production
- Create and update site specific, seasonal schedules
- Open/close valves, enable heaters, power sensors
- Graph any logged parameter for last hour, last 24hours, week, month, etc.
- Remote access for service/support



Typical pool energy use and retrofit saving opportunities

